

# Ascension Lutheran Church & School

# MESSENGER

9<sup>th</sup> Sunday after Pentecost

[www.ascensiontucson.org](http://www.ascensiontucson.org)

July 24 & 25, 2010

We strive to make the Lord's house a place of joy. With joy, we welcome you and pray that you're filled with hope and happiness as you lift up your heart to God. Dear God, may the joy that comes from your presence be very real to each worshiper today. May your love touch us so powerfully that we will eagerly serve you always.

*Join us for Coffee, Donuts and Fellowship after our 8:00 and 9:30 a.m. services in Grace Hall*

## Upcoming Events!

### Summer Chorus Concert!

Benefits Interfaith Community Services (ICS)

Friday, July 30th † 7:00 p.m. † Family Life Center

Many people in the Tucson community sing in community choruses throughout the year. Most, if not all, of these choruses take a break during the summer and yet I continue to hear, "I really miss singing during the summer months when my chorus is on break". So the Southern Arizona Women's Chorus decided to host a "Summer Chorus" this year and invited people from various churches and the community choruses to participate for 8 weeks and "sing for fun". This will culminate in a concert here at Ascension Lutheran Church on **Friday, July 30th, 7:00 p.m.** The concert is free of charge, however we will be accepting donations of canned goods and money to benefit the Interfaith Community Services. Please come and enjoy some great music, fun and fellowship. Bring your neighbors and co-workers, even those you don't like - who knows, you might make new friends! *Blessings, Terrie Ashbaugh, ALCS Music Director*



### Work Day!

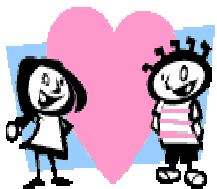
#### Campus Clean-Up!

Saturday, July 31 † 7:00 to 10:00 a.m.

Everyone is encouraged to come and help clean up our church campus! There is a lot to be done! Come early to beat the heat! We will have jobs for everyone - everyone is needed! *Questions? Contact Bill at 609-0814.*



### Smiles & Hugs!!



Have you ever wanted to work where everyone loves you and you receive all the smiles and hugs you can handle each day?

**ASCENSION LUTHERAN SCHOOL** has an afternoon, part-time position opening

for a pre-kindergarten classroom assistant and this position provides you with those wonderful benefits listed above! Applications and the job description are available in the school office. **Applications must be submitted by July 28, 2010.**

### ChristCare Community & ChristCare Leader Training

The weeks of Pentecost bring perfect lessons about the fellowship of believers. *"They devoted themselves to the apostle's teaching and to fellowship, to the breaking of bread and to prayer."* How does that relate to Tucson and Ascension Lutheran Church and School? God's Word says:



- *Love one another ~ John 13:34*
- *Pray for one another ~ James 5:16*
- *Care for one another ~ 1 Cor 12:24-25*
- *Encourage one another ~ 1 Thess 5:11*
- *Submit to one another out of reverence for Christ ~ Eph 5:21*
- *Admonish one another ~ Col 3:16*
- *Spur one another on toward love and good deeds ~ Hebr 10:24*

Through Biblical equipping, missional service, prayer and worship, and community building, Ascension is blessed with 18 ChristCare groups that create community. On **October 5**, we will begin training more leaders! If you'd like to be a part of that class, want to join a ChristCare group, or are eager to learn more about community at Ascension, we'd love to visit with you! *Questions? Contact Jo Riester 742-2882*

### Nursery Worker(s) Needed

One of our very loyal Nursery workers will no longer be able to serve on a regular basis so we are in search of a replacement (or two)! We are looking for an adult willing to serve at our Saturday 5:00 p.m. worship service either every week or in a rotation beginning in August. This position does receive compensation. *If you are interested or would like more information please contact Keri Sammons at [volunteer@ascensiontucson.org](mailto:volunteer@ascensiontucson.org) or contact the church office, 297-3095.*



### Seeking Room to Rent

A LCMS Ft. Wayne seminary deaconess student is seeking to rent out a room for a short time, until her wedding in September. She has finished all the academics at the seminary, but is searching for a place to finish her internship work. She really just needs a place for the night, as she will be out much of the daytime hours. *If you are able to help with this request, please call Jo Riester, 742-2882 for more info.*



## Life Quotes

“Along with the facts about abstinence, parenting, adoption, and abortion, it is important for parents to talk with their teens before a crisis. Teens need to know there is nothing they could ever do that could not be handled with God’s help.” *Grace Kern, director of Word of Hope (888-217-8679)* This “Life Quote” is from Lutherans For Life – [www.lutheransforlife.org](http://www.lutheransforlife.org).



**“If anyone would come after me, he must deny himself and take up his cross and follow me.”**

MARK 8:34, NIV



## ChristCare Questionnaire for Leaders and Group Members

If you have not received a copy of this survey from your ChristCare Leader, please fill this one out and turn it into the Info Desk (Attn: Amy Tilley or Jo Riester) or into your ChristCare Leader. Please return by September 1<sup>st</sup>. **Please answer these questions anonymously, as we want to protect your confidentiality.** If you have any questions, please call Amy (784-4911) or Jo (742-2882). We appreciate your feedback and will let you know the results as soon as we compile all the information.

1. On a scale of 1-5 (1=poor/5=great), how would you rate your overall experience in your group within the past year?
2. What one thing have you most appreciated about this group?
3. What one thing could your group improve on?
4. How has this group contributed to your growth as Jesus’ disciple?
5. Are we carrying out the mission God wants us to do as a group?
6. What topics or books of the Bible do you want to focus on in your own personal spiritual growth?
7. What are ways that your group could grow?
8. Please share any other comment you have in addition to those above. Thank you for your time, feedback, and continued participation in Christ Care!

# This Week at Ascension

<b>THIS SUNDAY</b>	<i>July 25</i> -- 9:30 a.m.	<i>Worship at 8:00, 9:30 &amp; 11:00 a.m.</i> <i>Adult Bible Study (9:30 &amp; 11:00 a.m.)</i> <i>Summer Sunday School</i>
<b>MONDAY</b>	<b>July 26</b> 7:00 p.m.	Community Chorus Rehearsal
<b>TUESDAY</b>	<b>July 27</b> 6:00 p.m.	AA
<b>WEDNESDAY</b>	<b>July 28</b> 8:30 a.m. 6:30 p.m.	Blanket Circle Intro to the Gospels - Servanthood
<b>THURSDAY</b>	<b>July 29</b> 6:00 p.m. 6:30 p.m. 7:00 p.m.	AA Men's ChristCare Joyful Noise Rehearsal
<b>FRIDAY</b>	<b>July 30</b> 7:00 p.m.	<b>Summer Chorus Concert benefitting ICS</b>
<b>SATURDAY</b>	<b>July 31</b> 7:00 a.m. 5:00 p.m.	<b>Campus Clean-Up!</b> <b>WORSHIP</b>
<b>SUNDAY</b>	<b>Aug 1</b> -- -- 9:30 a.m. 9:30 a.m. 12:15 p.m.	<i>Worship at 8:00, 9:30 &amp; 11:00 a.m.</i> <i>Adult Bible Study (9:30 &amp; 11:00 a.m.)</i> <i>School Teacher/Staff Installation (cake reception after service)</i> <i>Summer Sunday School</i> <i>Youth SundayShip</i>

## WORSHIP TIMES

### *Saturday*

Traditions of Praise Worship: 5:00 p.m.

### *Sunday*

Traditions of Praise Worship:

8:00 & 9:30 a.m.;

Praise Celebration: 11:00 a.m.

**Sunday School:** 9:30 a.m.

**Adult Bible Class:**

9:30 a.m. & 11:00 a.m.

## LESSON READINGS FOR NEXT WEEK

*First Lesson:* Colossians 3:1-11

*Gospel:* Luke 12:22-34

## THE MESSENGER

All articles for the Weekly Messenger should be turned in by

**Noon each Wednesday**

(unless otherwise stated).

Articles should be brief and no more than a ten-line paragraph, and will not run for longer than 2 weeks at a time.

You may submit your articles via email to:

[the.editor@ascensiontucson.org](mailto:the.editor@ascensiontucson.org)

or you can turn your hard copy into the church office. Article submissions cannot be taken over the phone. If you have any questions please contact the church office at 297-3095.

*If you would like to receive an electronic version (EMAIL) of this Messenger please contact the church office.*

## PRAYER CHAIN

Anyone wishing to submit a prayer request or participate as a member of the prayer chain should contact:

Jean Fast at 690-9223

or email:

[4jeanfast@gmail.com](mailto:4jeanfast@gmail.com)

**All Prayer Requests are welcome!**

## ROOM SCHEDULING

To schedule a meeting room, please contact Barry in the Church Office to fill out a Facility Request Form at 297-3095 or

[church.office@ascensiontucson.org](mailto:church.office@ascensiontucson.org)

It is important to have your event go through the master calendar to eliminate conflicts. This includes room set up details & other needed equipment.

## OUR ATTENDANCE

(July 17/18)

Saturday 5:00p.....  
 Sunday 8:00a.....  
 Sunday 9:30a.....  
 Total Communed.....  
 Sunday School.....

**To Be Posted Next Week**

## SERMONS ONLINE

You can now watch a video of the weekly sermon on our web site.

Go to: [www.ascensiontucson.org](http://www.ascensiontucson.org)

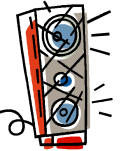
Click on "Sermons Online" then scroll down to the date of the sermon and click on the title. Stay tuned as we continue to expand our media ministry via the web.

## Need a Ride to Church?

To schedule a van ride to church contact Bill Kadow at 297-0769

# YOUTH NEWS!

amplify  
living faith out loud



## High School Youth Group

**Sundayship** is next **Sunday, August 1st**. Join Mrs. Wellik at the 11am service for worship and go to a nearby restaurant afterward for fellowship. Bring money for lunch, but don't let that keep you from participating. You can contact Mrs. Wellik for confidential financial assistance.

*Questions?? contact Mrs. Wellik at 940-7790 (call or text!) or [k.wellik@ascensiontucson.org](mailto:k.wellik@ascensiontucson.org)*

## Interfaith Community Services ICS ANNOUNCEMENTS

**HELP A CHILD GO BACK TO SCHOOL WITH GIFTS OF LOVE:** With the new school year fast approaching, ICS has begun accepting donations of school supplies for children of low-income families. We are especially in need of backpacks and 3-ring binders; however, spiral notebooks, pens and pencils, crayons, markers/highlighters, rulers, scissors, folders, glue sticks, pencil boxes, colored pencils, protractors, erasers, etc. are also welcome. Students are required to bring their own supplies to school, and the cost can easily run \$100 per child. Please bring supplies to the ICS office before August 9. For more information, call ICS at 297-6049.

**10-10-10 CONCERT:** Tickets are available NOW to ICS's 25th Anniversary Concert on October 10 3:00 p.m. at St. Andrew's Presbyterian Church, 7575 N. Paseo del Norte. Native American flute artist R. Carlos Nakai and classical guitarist Gabriel Ayala will be playing together for the first time! Tickets are only \$10. We want to fill all 900 seats in St. Andrew's beautiful and acoustically exceptional sanctuary. Come celebrate ICS's 25th anniversary! Call 297-2738 x209 to order your tickets.

**2010 "WE CARE" GOLF CLASSIC PLANS UNDER WAY:** Golfers are registering for this year's Golf Classic, to be held again at the beautiful Omni Tucson National Resort on Veterans Day, November 11. New this year will be an exciting \$250,000 "shoot-out" raffle. Each year the tournament gains in popularity, so this year we've expanded the field to 288 golfers! ICS would love to have at least one foursome from each of our member faith communities. Share your congregation's ideas for raising funds to send a foursome with Development Manager Diane Luber at [dluber@icstucson.org](mailto:dluber@icstucson.org). Your support in making the 2010 Golf Classic a success is greatly appreciated. Registration and event details coming soon to [www.icstucson.org](http://www.icstucson.org), so visit our website often!

**MOBILE MEALS AVAILABLE:** If you or someone you know needs fresh, nutritious meals delivered, call about our Mobile Meals (297-6049). Friendly volunteers can bring meals each weekday if you can't cook for yourself.

**VISIT [www.icstucson.org](http://www.icstucson.org) for more information**  
or call 297-6049 between 9:00 a.m. - 4:00 p.m.